

Wireless Gas Leak Detector

Introduction

RISCO Group's Wireless Gas Leak Detector detects mixtures of air and combustible gases (Natural Gas, Methane, Propane and Butane).

Upon detecting the presence of gas, the unit emits an alarm and notifies the control panel.

The main features of your Wireless Gas Leak Detector include the following:

- ❖ Integrated transmitter designed for use RISCO Group's wireless alarm systems
- ❖ Easy to install
- ❖ Monitoring for Natural Gas, Methane, Propane and Butane in a continuous manner
- ❖ Loud alarm (85 dB) when detecting a buildup of Gas
- ❖ Test button
- ❖ Self-test

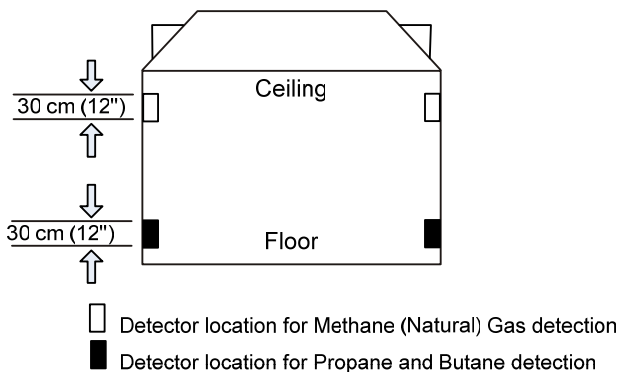
Selecting the installation location

The Wireless Gas Leak Detector will function effectively if installed in the correct location. Consider the following before mounting the gas alarm:

- ❖ Methane (Natural) Gas: Methane is lighter than air, therefore the greatest concentration of gas is found right below the ceiling, and therefore the Wireless Gas Leak Detector should be installed on the wall, approximately **30 cm (12")** below the ceiling.
- ❖ Butane Gas: Propane and Butane are heavier than air, therefore the greatest concentration of gas is found right above the floor level. The Wireless Gas Leak Detector should therefore be installed about **30cm (12")** above the floor. Do not mount in a location where the gas alarm could be damaged by dirt, liquids, etc.

Note:

Do not install the detector on the ceiling or on the floor.



- ❖ Install the detector in close proximity to every gas-operated appliance.
- ❖ Do not:
 - Install the gas detector directly on any gas appliance.
 - Install the gas detector in sealed or closed compartments or in an area where a wall or a closed door can obstructs the flow of gas to the gas alarm.
 - Install the gas detector in locations where fans, open doors, open windows etc. may prevent gas from reaching the sensor.
 - Install the gas detector in any room where aerosols or ammonia are used (e.g. bathrooms).

To install the detector:

1. Remove the mounting bracket from your unit according to Fig. 1.

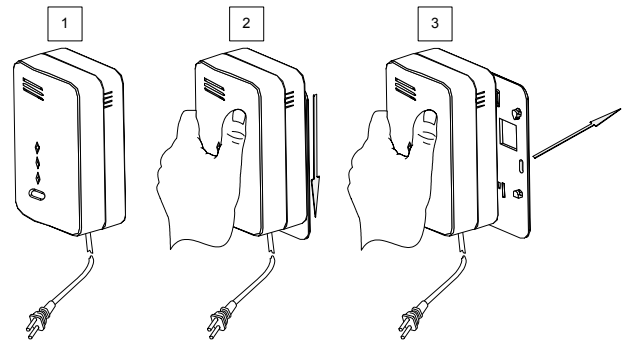


Fig. 1

2. Hold the Mounting bracket against the wall as a template and mark the locations for the 2 mounting holes.
3. Using a 3/16-inch (5 mm) drill bit, drill two holes at the marks and insert wall plugs (Fig. 2).

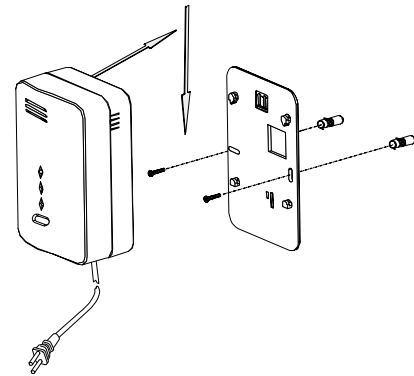


Fig. 2

4. Secure the mounting bracket to the wall.
5. Line up the side slot of the bracket and the detector. Push the detector onto the mounting bracket and fix it (see arrow direction, Fig. 2). Pull the detector outwards to make sure that it is securely attached to the mounting bracket.
6. Connect the detector power cable to the wall power outlet.

Transmitter/Receiver Communication Setup

1. Set the receiver to Learn mode.
2. A Write message is sent shortly after connecting the detector to power supply (after 10 seconds).
- and -
When test button is pressed for at least 3 seconds (have to be pressed during the first 10 minutes after powering the detector).
3. Verify that the detector has been identified by the receiver.

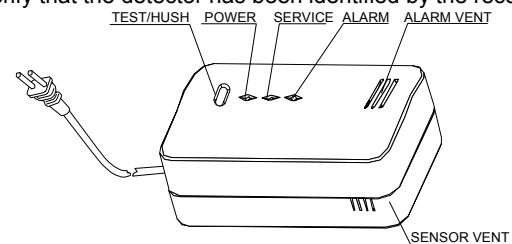


Fig. 3

TESTING YOUR DETECTOR

To test the detector (do not test when detector is at warm up mode), press the Test Button.

- The red and orange LED's will flash and a sound will be heard

MUTING YOUR DETECTOR

You can partially mute the detector in an event of alarm by pressing the Test Button. The Red LED will continue to flash and a short beep will be heard every 16 seconds.

DETECTOR MALFUNCTIONING

A malfunctioning unit is indicated by beep-sounding on and off sequentially, i.e., beeping for 3 seconds with 3 seconds delay between two beeps. If this occurs, unplug the detector from the power source for 10 seconds and then plug the unit again. Should the unit beep intermittently, DO NOT use this detector. Send the malfunctioning unit for servicing.

TAKING CARE OF YOUR DETECTOR

You have to maintain the detector frequently to ensure it working properly. Few tips are provided for you to take care of your detector:

1. Use a vacuum cleaner to clean the air vents occasionally to keep them free of dust.
2. Push the Test button on your detector to test its operating function once every week.

LED & BUZZER Indication

The LED light and buzzer turn on and/or off to indicate various situations. There are four different light and buzzer operations:

Led Color	Status	Meaning
Green (Power)	Flashing (for 4 minutes)	Warm up (the status between Power -Up and Normal operation)
	On	Normal Condition (Power On)
RED (Alarm)	Flashing + Sequential Alarm Sound	Alarm
Orange (service)	On	Malfunction/ sensor interruption

ACTIONS TO TAKE WHEN ALARM SOUNDING

In case of harmful levels of gas being detected, your detector will go into a continuous full alarm. Try to take the following necessary actions immediately or evacuate the building:

- (a) Widely open doors and windows
- (b) Disconnect electrical appliances
- (b) Avoid open fire
- (c) Repair the gas leak by a professional gas repairer

ACTIONS TO TAKE AFTER THE PROBLEM IS CORRECTED

Once the problem about the gas presence in the premises has been corrected, the alarm of the detector should be off. After waiting for 10 minutes, push the Test button to test the detector so that you can make sure that the detector is working properly again.

SPECIFICATIONS

ELECTRICAL

Power supply:	AC 230V
Frequency:	~50/60Hz
Radio Frequency	868.65 MHz / 433.92 MHz
Supervision Transmission:	15 min. - For RWT6GS80000A model 65 min. - For RWT6GS40000A model
Response Wave:	Less than 20% in the lower explosion limit
Signal Volume:	Approximately 85 dB at a distance of 3 meters
Sensor Type	Hotwire

PHYSICAL

Size (L X W X H): 140 X 80 X 49 mm

ENVIRONMENTAL

Operating Temperature: 0°C to 40°C (32°F to 122°F)

Storage Temperature: -20°C to 60°C (-4°F to 140°F)

Specifications are subject to change without prior notice. Should any questions arise please contact your supplier.

ORDERING INFORMATION

P/N	Description
RWT6GS80000A	Wireless Gas Leak Detector 868.65 MHz
RWT6GS40000A	Wireless Gas Leak Detector 433.92 MHz

RISCO Group Limited Warranty

RISCO Group and its subsidiaries and affiliates ("Seller") warrants its products to be free from defects in materials and workmanship under normal use for 24 months from the date of production. Because Seller does not install or connect the product and because the product may be used in conjunction with products not manufactured by the Seller, Seller can not guarantee the performance of the security system which uses this product. Sellers' obligation and liability under this warranty is expressly limited to repairing and replacing, at Sellers option, within a reasonable time after the date of delivery, any product not meeting the specifications. Seller makes no other warranty, expressed or implied, and makes no warranty of merchantability or of fitness for any particular purpose. In no case shall seller be liable for any consequential or incidental damages for breach of this or any other warranty, expressed or implied, or upon any other basis of liability whatsoever. Sellers obligation under this warranty shall not include any transportation charges or costs of installation or any liability for direct, indirect, or not be compromised or circumvented; that the product will prevent any persona; injury or property loss by intruder, robbery, fire or otherwise; or that the product will in all cases provide adequate warning or protection. Buyer understands that a properly installed and maintained alarm may only reduce the risk of intruder, robbery or fire without warning, but is not insurance or a guaranty that such will not occur or that there will be no personal injury or property loss as a result. Consequently seller shall have no liability for any personal injury, property damage or loss based on a claim that the product fails to give warning. However, if seller is held liable, whether directly or indirectly, for any loss or damage arising from under this limited warranty or otherwise, regardless of cause or origin, sellers maximum liability shall not exceed the purchase price of the product, which shall be complete and exclusive remedy against seller. No employee or representative of Seller is authorized to change this warranty in any way or grant any other warranty.

WARNING: This product should be tested at least once a week.

Contacting RISCO Group

RISCO Group is committed to customer service and product support. You can contact us through our website (www.riscogroup.com) or at the following telephone and fax numbers:

United Kingdom

Tel: +44-161-655-5500
sales@riscogroup.co.uk
technical@riscogroup.co.uk

Italy

Tel: +39-02-66590054
info@riscogroup.it
support@riscogroup.it

Spain

Tel: +34-91-490-2133
sales-es@riscogroup.com
support-es@riscogroup.com

France

Tel: +33-164-73-28-50
sales-fr@riscogroup.com
support-fr@riscogroup.com

Belgium

Tel: +32-2522 7622
sales-be@riscogroup.com
support-be@riscogroup.com

USA

Tel: +305-592-3820
sales-usa@riscogroup.com
support-usa@riscogroup.com

Brazil

Tel: +55-11-3661-8767
sales-br@riscogroup.com
support-br@riscogroup.com

China

Tel: +86-21-52-39-0066
sales-cn@riscogroup.com
support-cn@riscogroup.com

Israel

Tel: +972-3963-7777
info@riscogroup.com
support@riscogroup.com

All rights reserved.

No part of this document may be reproduced in any form without prior written permission from the publisher.

