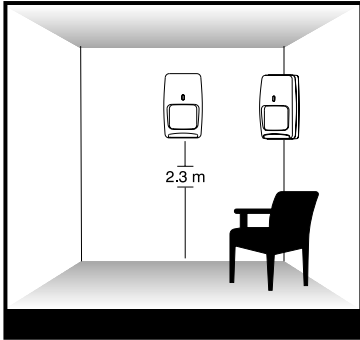


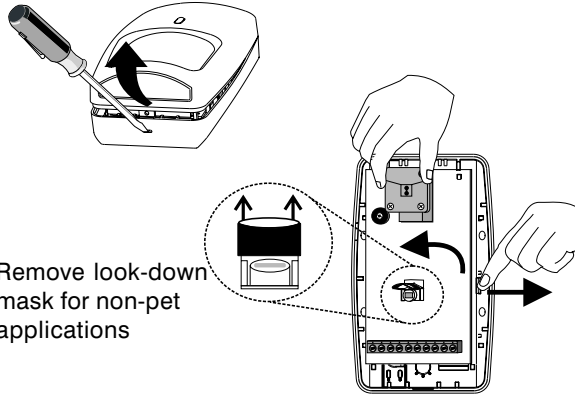
1 Select the mounting location.



Mounting Location Guidelines

- 2.3 m mounting height
- Avoid direct or reflected sunlight
- Aim sensor away from windows or heating/cooling devices
- Sensor must have a clear line-of-sight to protected area
- **See Special Instructions for pet applications**

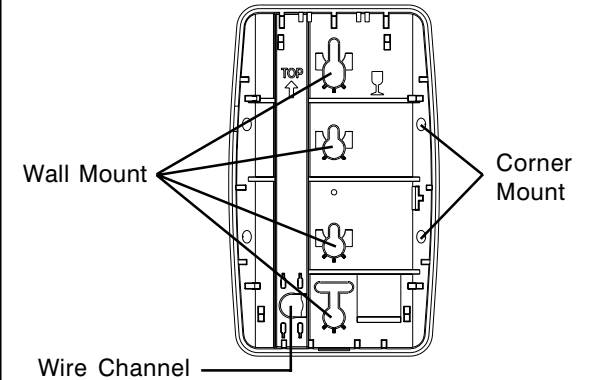
2 Separate the sensor housings and remove the printed circuit board (PCB).



Remove look-down mask for non-pet applications

- Use a small screwdriver to unfasten the housing latch. Gently pull apart the housings.
- Push outward on the PCB latch and lift the PCB out of the housing.

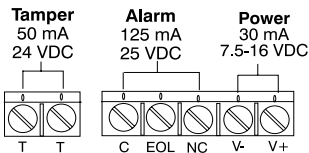
3 Mount the unit.



- Slide the wire through the wire channel and wire access in the back housing.
- Mount the back housing flat against a wall or in a corner.
- Replace the PCB.

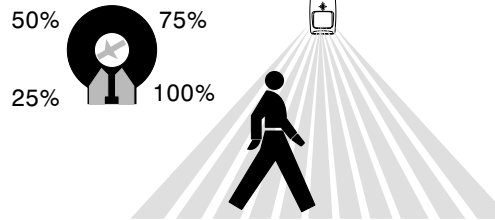
4 Wire the unit.

DT-7435



- Connect wires as shown using 0.3 - 1.0 mm² wire size. Observe proper polarity.

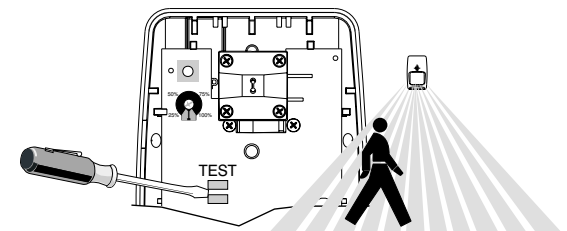
5a Walk-test the sensor.



- Apply power to the unit. Initialization is complete when the LED stops flashing slowly.
- Adjust the microwave range to minimum setting (25%) by turning the range adjustment counterclockwise using a small screwdriver.
- Replace the front housing.
- Begin walking through the detection area.
 - The LED will turn red, indicating an alarm detection.
- Increase the microwave range as necessary.
- Repeat the items in step 5a until proper detection range is obtained.

5b Optional: Walk-test using Zone Finder.

Use the Zone Finder mode to identify the PIR and/or microwave pattern. In Zone Finder mode the red LED is disabled.



- Use a screwdriver to short the test pads.
- During the Zone Finder walk-test mode, the LED turns:
 - green for PIR detection;
 - yellow for microwave detection.
- Adjust the microwave range as necessary.
- Zone finder mode times out after ten minutes.

LED INDICATORS

LED	OPERATION			
	Normal	Power Up	Trouble	Zone Finder
Red	ON Alarm	Slow Blink	Fast Blink	OFF
Yellow	ON Microwave	OFF	OFF	ON Microwave
Green	ON PIR	OFF	OFF	ON PIR

DIP SWITCH SETTINGS (SW1)

Factory default settings are shown in grey.

Switch	OFF	ON
1	Harsh Sensitivity	Standard Sensitivity
2	LED Disabled	LED Enabled



TROUBLE SHOOTING

Problem: Red LED is flashing rapidly.

Explanation: The sensor is in one of three conditions:

Microwave supervision failure: The sensor continues operating using PIR as the only detection method. When detection occurs on the PIR channel, the alarm relay will latch open until the Microwave trouble is removed.

PIR self-test failure: Alarm relay does not actuate.

Temperature compensation failure: When alarm occurs, the alarm relay will latch open until the trouble is cleared.

Solution: Power down the sensor or enter zone finder mode which will perform self-test. If the trouble does not clear, replace the sensor.

SPECIAL INSTRUCTIONS FOR INSTALLATIONS CONTAINING PETS

To take full advantage of the pet immunity the following guidelines should be followed:

- Mount the center of the detector 2.3 m high.
- Ensure that the look-down mask is in place (see Step 2).
- Mount where animals cannot come within 1.8 m of the detector by climbing on furniture, boxes or other objects.
- Do not aim the detector at stairways that can be climbed by animals.

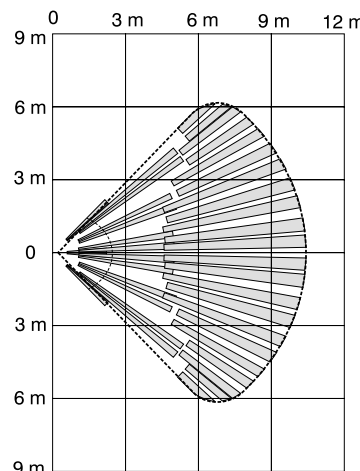
Notes:

This sensor will provide immunity to false alarms for an individual animal or a group of animals whose total weight is equal to or less than 45 kilograms.

DETECTION PATTERNS

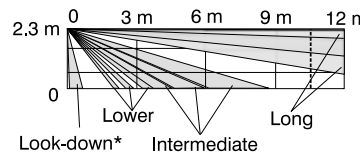
DT-7435 EU Top View

Wide Angle Lens
11 m



DT-7435EU

Side View
Wide Angle Lens



* Look-down fingers are enabled only when the look-down mask is removed (see Step 2).

PRODUCT SPECIFICATIONS

Range:

11 m x 11 m

Alarm relay:

Energized Form A
125 mA, 25 VDC, 20 Ohm series resistor

Tamper:

NC, 50 mA, 24 VDC

Power requirements:

7.5 - 16 VDC
25 mA typical, 30 mA maximum, 12 VDC
AC Ripple: 3 V peak-to-peak at nominal 12 VDC

Microwave frequencies:

24.125 GHz

PIR white light immunity:

6,500 Lux typical

Fluorescent light filter:

50 Hz

RFI immunity:

30 V/m, 10 MHz - 1000 MHz

Operating temperature:

-10° to +55° C (14° to +131° F)
5 - 95% relative humidity (non-condensing)

Self-test intervals:

Microwave Supervision	Every 5 seconds
PIR self-test	Once every hour
Temp. Comp.	Every 30 seconds

PIR fields-of-view:

Standard Wide Angle Lens
22 long range edges
12 intermediate edges
6 lower edges
* 4 look-down edges

Dimensions:

11.9 cm H x 7.1 cm W x 4.2 cm D

Sensitivity:

Standard 3 - 4 steps
Harsh 4 - 5 steps